

PART OF N.E. 1/4 OF SECTION 22, T.7N., R.1E., S.L.B. & M.  
**WOLF STAR P.R.U.D. PHASE 1 – PLAT B**

IN WEBER COUNTY

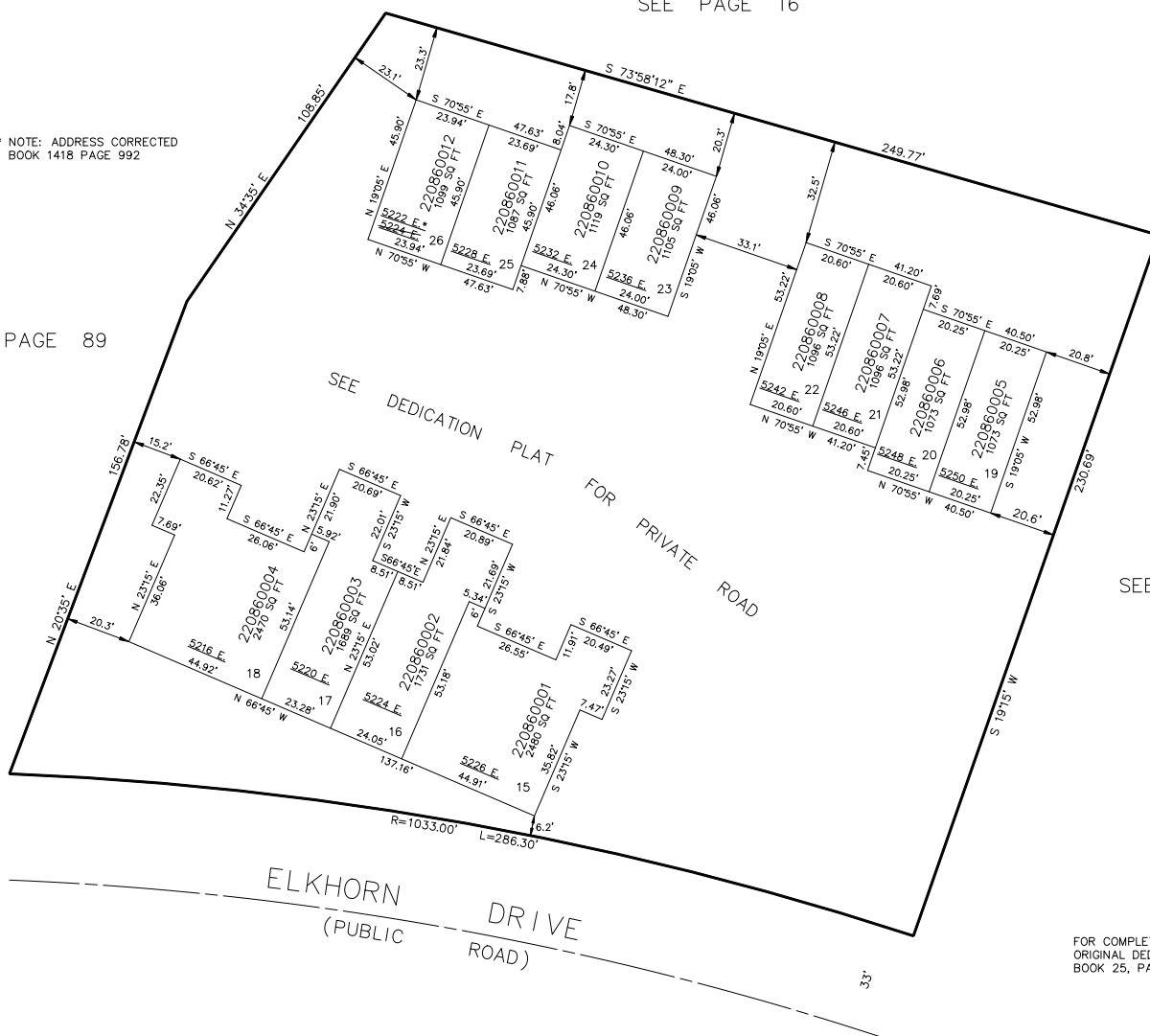
TAXING UNIT: 203

SCALE 1" = 30'

SEE PAGE 16

\* NOTE: ADDRESS CORRECTED  
 BOOK 1418 PAGE 992

SEE PAGE 89



SEE PAGE 16

SEE PAGE 85